

Product data sheet – Paneltwistec A4

Product description

The Paneltwistec made of A4 stainless steel is a fastener for load-bearing timber structures between components made of solid timber, glued laminated timber, veneer laminated timber or similar glued wood materials.

The screw has a scraper groove at the screw tip and is available in the 'countersunk head', 'flange button head' and 'decorative head' variants. The screw's special geometry ensures a lower splitting effect when screwing in.

Material

Stainless Steel

A4 stainless steel

- Suitable for woods containing high levels of tannin, such as cumarú, oak, merbau, robinia, etc.
- Suitable for salty atmospheres
- Acid-resistant under certain circumstances
- Can be used in service classes 1, 2 and 3
- Not suitable for chlorinated atmospheres

Advantages

- The special tip geometry reduces the splitting effect
- No pre-drilling is normally required when used in coniferous wood
- The A4 stainless steel material allows a very wide area of application
- No need to hit the screws during the screwing-in process thanks to the TX drive

Approvals

- European Technical Assessment ETA 11/0024
- Self-drilling screws as wood fasteners



Product data sheet – Paneltwistec A4

Product table

Paneltwistec A4					
Art. no.	Dimensions Ød x L [mm]	Thread length lg [mm]	Head diameter Ødh [mm]	Drive	PU
Countersunk head, A4 stainless steel					
901476	4,0 x 25	15	7,75	TX20 ●	500
111442	4,0 x 35	21	7,75	TX20 ●	500
903202	4,0 x 40	24	7,75	TX20 ●	500
111443	4,0 x 45	27	7,75	TX20 ●	500
901109	4,0 x 55	33	7,75	TX20 ●	500
111444	4,0 x 60	36	7,75	TX20 ●	500
111445	4,0 x 70	42	7,75	TX20 ●	200
111446	4,0 x 80	48	7,75	TX20 ●	200
111447	4,5 x 45	27	8,75	TX25 ●	200
111448	4,5 x 60	36	8,75	TX25 ●	200
111449	4,5 x 70	42	8,75	TX25 ●	200
111450	4,5 x 80	48	8,75	TX25 ●	200
903990	5,0 x 40	24	9,75	TX25 ●	200
111451	5,0 x 50	30	9,75	TX25 ●	200
111452	5,0 x 60	36	9,75	TX25 ●	200
111453	5,0 x 70	42	9,75	TX25 ●	200
111454	5,0 x 80	48	9,75	TX25 ●	200
903580	5,0 x 100	60	9,75	TX25 ●	200
111459	6,0 x 60	36	11,75	TX30 ●	100
944885	6,0 x 70	42	11,75	TX30 ●	100
111460	6,0 x 80	48	11,75	TX30 ●	100
111458	6,0 x 100	60	11,75	TX30 ●	100
901478	6,0 x 120	60	11,75	TX30 ●	100
903280	8,0 x 80	48	14,5	TX40 ●	50
903281	8,0 x 100	60	14,5	TX40 ●	50
903282	8,0 x 120	80	14,5	TX40 ●	50
903283	8,0 x 140	80	14,5	TX40 ●	50
903284	8,0 x 160	80	14,5	TX40 ●	50
903285	8,0 x 180	80	14,5	TX40 ●	50
903286	8,0 x 200	80	14,5	TX40 ●	50
903287	8,0 x 240	80	14,5	TX40 ●	50
903288	8,0 x 240	80	14,5	TX40 ●	50
903289	8,0 x 260	80	14,5	TX40 ●	50
903290	8,0 x 280	80	14,5	TX40 ●	50
903291	8,0 x 300	80	14,5	TX40 ●	50

Product data sheet – Paneltwistec A4

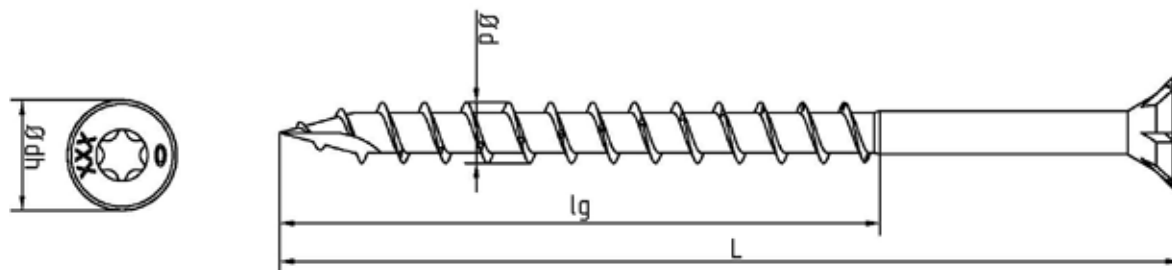
Product table

Paneltwistec A4					
Art. no.	Dimensions Ød x L [mm]	Thread length lg [mm]	Head diameter Ødh [mm]	Drive	PU
Countersunk head, A4 stainless steel					
903292	8,0 x 320	80	14,5	TX40 ●	50
903293	8,0 x 340	80	14,5	TX40 ●	50
903294	8,0 x 360	80	14,5	TX40 ●	50
903295	8,0 x 380	80	14,5	TX40 ●	50
903296	8,0 x 400	80	14,5	TX40 ●	50
Flange button head, A4 stainless steel					
903260	8,0 x 80	48	16	TX40 ●	50
903261	8,0 x 100	60	16	TX40 ●	50
903262	8,0 x 120	80	16	TX40 ●	50
903263	8,0 x 140	80	16	TX40 ●	50
903264	8,0 x 160	80	16	TX40 ●	50
903265	8,0 x 180	80	16	TX40 ●	50
903266	8,0 x 200	80	16	TX40 ●	50
903267	8,0 x 220	80	16	TX40 ●	50
903268	8,0 x 240	80	16	TX40 ●	50
903269	8,0 x 260	80	16	TX40 ●	50
903270	8,0 x 280	80	16	TX40 ●	50
903271	8,0 x 300	80	16	TX40 ●	50
903272	8,0 x 320	80	16	TX40 ●	50
903273	8,0 x 340	80	16	TX40 ●	50
903274	8,0 x 360	80	16	TX40 ●	50
903275	8,0 x 380	80	16	TX40 ●	50
903276	8,0 x 400	80	16	TX40 ●	50
Decorative head, A4 stainless steel					
901479	3,2 x 25	17,5	5,10	TX10 ○	1000
903038	3,2 x 30	21	5,10	TX10 ○	1000
901480	3,2 x 35	19	5,10	TX10 ○	1000
901481	3,2 x 40	24	5,10	TX10 ○	1000
903104	3,2 x 50	34	5,10	TX10 ○	1000

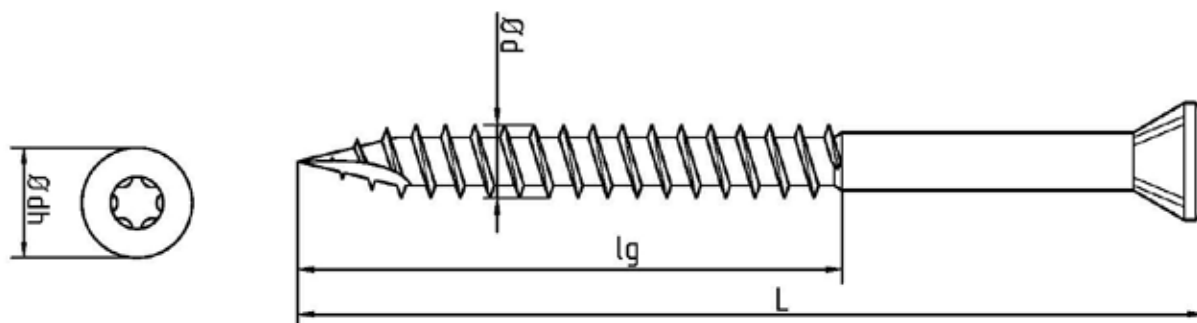
Product data sheet – Paneltwistec A4

Drawings

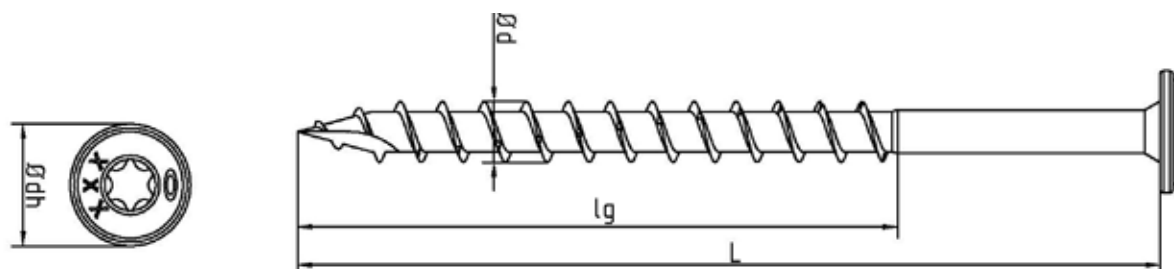
- Paneltwistec Countersunk head, A4 stainless steel:



- Paneltwistec Countersunk head, A4 stainless steel:



- Paneltwistec Flange button head, A4 stainless steel:



If you are not familiar with how this product is used, and particularly with the product's intended use, please contact our Application Technology department (Technik@eurotec.team).