



**Marshall**  
INNOVATIONS  
CONSTRUCTION SOLUTIONS



# PRODUCT GUIDE

[mwnz.com](http://mwnz.com)

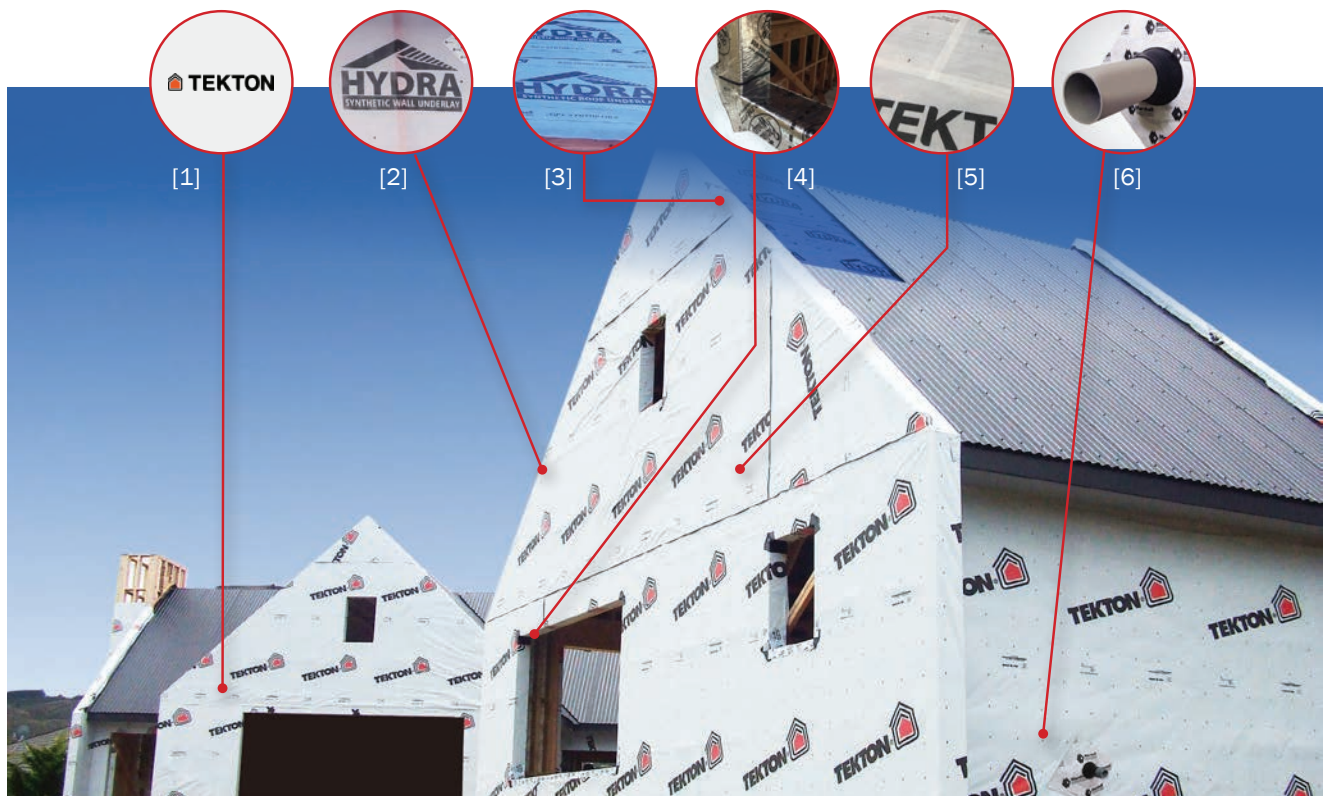
2023



# CONTENTS

Marshall Weatherization System	4
HYDRA Roof Underlay	5
Tekton Wall Underlay	6
HYDRA Wall Underlay	7
SUPER-STICK	8
Trade-Seal	9
Trade-Flash	10
Tuatara Floor Protection	11
Stormcell	12
Pro-Drain 8 Drainage Board	13
Pro-Joist	14
Pro-Kickout Flashing	15
Protecto Sill System	16
One Piece Sill Tape	17
Protecto Tape Plasterable Tape	18
Pro-Seal 45 <sup>Plus</sup>	19
ProFoot Pedestal System	20

# MARSHALL WEATHERIZATION SYSTEM



**ONE SYSTEM, ONE SPECIFICATION, ONE SUPPLIER**

The Marshall Weatherization System provides a complete weatherproof construction envelope, delivered by a single supplier. Marshall Innovations can now offer the specifier a single point of contact, and a complete technical specification to simplify the design process, backed by a 50-year durability warranty.

## The full system consists of:

- [1] TEKTON WALL UNDERLAY
- [2] HYDRA WALL UNDERLAY
- [3] HYDRA ROOF UNDERLAY
- [4] SUPER-STICK OR PROSILL TAPE
- [5] SEAM TAPE
- [6] TRADE-SEAL

## BENEFITS

- Full system that combines a range of respected products to form a secure construction envelope
- Ability to switch between HYDRA Wall Underlay and Tekton Wall Underlay
- Highly compatible product integration
- Can be exposed to UV and weather for up to 60 days
- A system that combines superior strength, water hold-out and flexibility with ease of installation
- Meets the requirements of the New Zealand Building Code (NZBC) Clause B2 Durability and Clause E2 External Moisture



# HYDRA ROOF

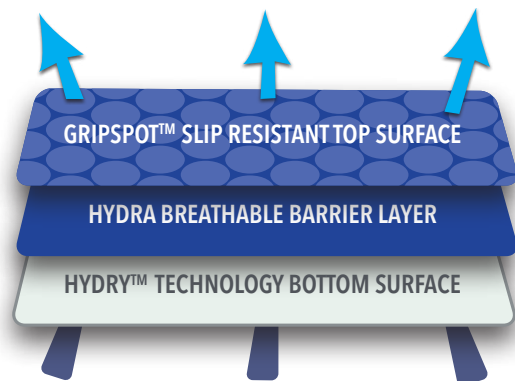


Absorbent



FLAME  
RETARDANT

HYDRA Roof is a breathable, fire retardant, self-supporting, tri-laminate, flexible underlay designed with HYDRA's GRIPSPOT™ technology for ultimate safety during roof construction.

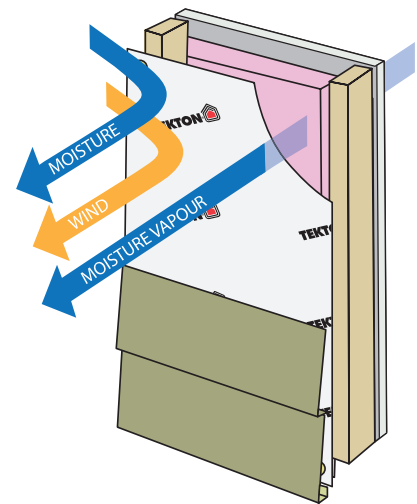


## BENEFITS

- Breathable, self-supporting, synthetic underlay
- Fire retardant, flammability index of  $\leq 5$  as per AS1530
- UV Exposure 14 days
- 100% recyclable
- Tri-laminate offers high strength and light weight
- GripSpot provides a slip resistant walking surface
- HYDRA Breathable Barrier Layer prevents water but allows for transfer of moisture vapour
- HYDRY Technology bottom layer is designed to absorb moisture in the roof space
- Suitable on timber and steel frame
- Suitable with pressed metal and masonry tiles
- Suitable with profiled metal roofing
- Suitable in all Wind Zones stated in NZS 3604 up to and including, extra high
- Forms part of the Marshall Weatherization System
- Available in 1250mm x 20m & 1250mm x 40m







Tekton Wall Underlay is a breathable, fire retardant flexible wall underlay. Tekton provides an extra layer of protection, securing the building envelope from the outside elements. Whilst blocking air and water from entering, Tekton's breathability allows internal moisture vapour out delivering the perfect balance between holdout and breathability.

Brand with your own logo & details

## BENEFITS

- Is breather type coated, spun-bonded polypropylene
- Can be left exposed for 60 days
- Superior water holdout. Taking the industry to a new level for water resistance.
- Optimal surfactant resistance. Wash your building with confidence.
- Fire retardant with the Highest Fire rating of all underlay in NZ. It has a 0 rating on the Flammability Index.
- A leader in tear strength
- Suitable for all wind zones including extra high when used with RAB Systems
- Can be used with no internal wall linings, ie: gable ends.
- Increases your building's energy efficiency
- Used for residential and commercial applications
- Will not support the growth of mould
- Contains more than 23% recycled content
- Forms part of the Marshall Weatherization System
- Can be branded with customer's details
- Roll sizes 1.37 x 37m & 2740mm x 37m



# HYDRA WALL



HYDRA Wall Underlay is an absorbent, breathable, fire retardant, flexible wall underlay used behind all wall claddings. Suitable with absorbent and non-absorbent claddings in both direct and non-direct fixing.



**Absorbent**



**FLAME  
RETARDANT**

## BENEFITS

- Is an absorbent synthetic underlay
- Is a breathable type underlay
- Flammability index rating of  $\leq 5$
- Can be left exposed for 60 days
- Suitable in all wind zones including extra high when used with Rigid Air Barriers
- Roll size 2.74 x 37m & 1.37 x 37m
- Can be used with no internal wall linings ie: attic spaces
- Used for residential and commercial applications
- Suitable on timber and steel framing
- Meets provisions of NZBC: B2, E2 & F2
- Forms part of the Marshall Weatherization System





# SUPER-STICK



## Tape sizes:

- 75mm x 23m
- 150mm x 23m
- 200mm x 23m



**A GREENER SOLUTION**

- No VOCs, HFCCs or CFCs
- Non-allergenic
- No off-gassing
- No toxicity



Marshall Innovations SUPER-STICK Building Tape® is a high performance window and door flashing tape designed to be installed down to  $-6 \text{ deg}^{\circ}\text{C}$ . No more issues regarding adhesion in the cool of winter or heat of summer. No additional primers or mechanical fasteners required. SUPER-STICK Building Tape® utilizes a high tack pressure

sensitive adhesive (PSA) combined with a high performance toughened film. It is a greener and cleaner building tape solution that contains No VOC's, HFCC's, nor CFC's. It is non-toxic and non-allergenic. No more issues with sealant compatibility at the design or installation stage.

## BENEFITS

- Can be installed in extremely cold conditions to  $-6 \text{ deg}^{\circ}\text{C}$ \*
- Easy to install peel-and-stick application
- UV resistant for 90 days
- Compatible with most sealants, check suitability with sealant manufacturer
- Can be used with RAB systems - Plywood, fibre cement sheet
- Split back liner for easy install
- Can be installed in very hot conditions
- Extremely high puncture resistance and tensile strength
- Residential and Commercial applications
- Very thin and no build up and won't affect cavity battens or window installation
- Forms part of the Marshall Weatherization System
- Roll sizes 75mm x 23m, 150mm x 23m & 200mm x 23m

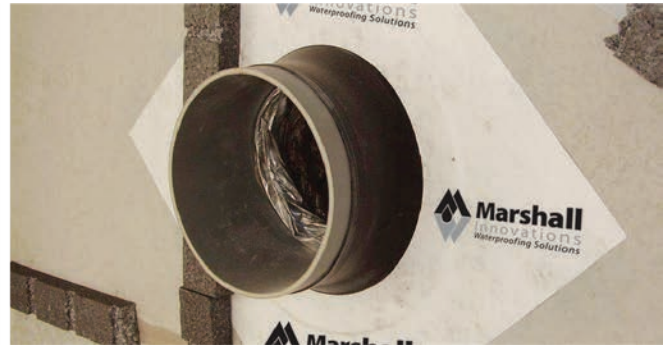
Note: Protecto SUPER-STICK Tape® can be applied in extreme cold weather; however we do not recommend applying tapes below  $0^{\circ}\text{C}$  due to health and safety reasons. \*When applying over any waterproofing membrane check for compatibility.





## BUILDING ENVELOPE PENETRATION SEAL

A one piece self adhesive collar for sealing around pipe and conduit.



### Installation

- Select appropriate diameter TRADE-SEAL - collar should be tight.
- TRADE-SEAL collar extension should be trimmed to get the best fit.
- TRADE-SEAL must not be forced on to the penetration.
- Ensure the surface to receive the TRADE-SEAL is clean and dry.
- Remove backing paper and slide collar over penetration.
- Adhere TRADE-SEAL at 45° to aid moisture run off.
- Smooth TRADE-SEAL onto substrate to ensure adhesion.
- Push TRADE-SEAL collar back onto penetration to fit cavity width.

### Sizes

8-12mm | 15-22mm | 25-32mm | 42-55mm | 50-70mm | 75-90mm | 100-110mm | 125-135mm | 150-165mm | 200-220mm

Sizes available to fit 8mm to 220mm diameter.

### BENEFITS

- A one component secondary flashing system
- Can be used on all accepted wall underlays including bituminous paper
- Can be installed on the inside of RAB systems and wall underlays - retrofit installation
- Requires no adhesives to hold in place
- Can be left exposed to Weather and UV for up to 90 days
- Will adhere to most clean and dry substrates including Fibre cement and Ply RAB board
- Forms part of the Marshall Weatherization System

## THE FLEXIBLE BACK FLASHING

TRADE-FLASH is an extrusion formed using two flat portions of hard uPVC that are joined together by a soft uPVC hinge. The middle section makes the TRADE-FLASH sufficiently flexible to be used as a flat, internal or external back flashing.

TRADE-FLASH is available 2.7m long and in two widths. One width of 200mm with the soft uPVC hinge 100mm in from each side and the other is 130mm wide with the soft uPVC hinge 65mm in from each side.

TRADE CAVITY CLOSER is 2.7m long x 75mm high x 20mm x 20mm punched extrusion. Used above windows and at the cladding base to provide drainage and ventilation of the cavity. The 75mm upstand is punched for easy fixing.



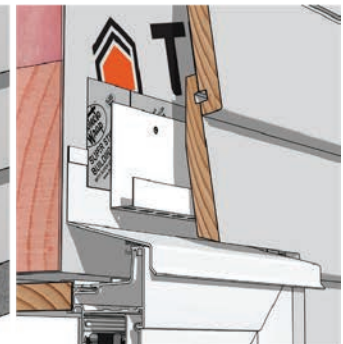
Internal Corners



External Corners



Wall



Windows

The Trade-Flash range offers a selection of premium concealed uPVC flashings. Designed with simplicity in mind to deliver solutions for a number of complex situations.

### BENEFITS

- TRADE-FLASH has a flexible centre hinge that allows the flashing to be used as a flat, internal, external or at any angle back flashing
- TRADE-FLASH incorporates a return on the outer edge of the flashing to contain any moisture
- TRADE-FLASH is used behind exterior cladding junctions as a moisture barrier to ensure any water moisture that manages to get past the joint between the substrates is directed harmlessly to the outside of the dwelling
- TRADE-FLASH is easy to cut and fit on site
- TRADE-FLASH is manufactured from uPVC. This material has proven performance and shows compliance with NZBC Clause B2 Durability as detailed in B2/VM1

# TUATARA GUARD



TUATARA GUARD Temporary Floor Protection is a spill absorbent membrane with built-in cushion technology. Featuring a patented slip resistant GRIPSPOT walking surface that reduces movement on floors. Designed to absorb spills without reducing its tear strength or staining the floor below. Can be used multiple times, surface can be easily cleaned through wiping or vacuuming.

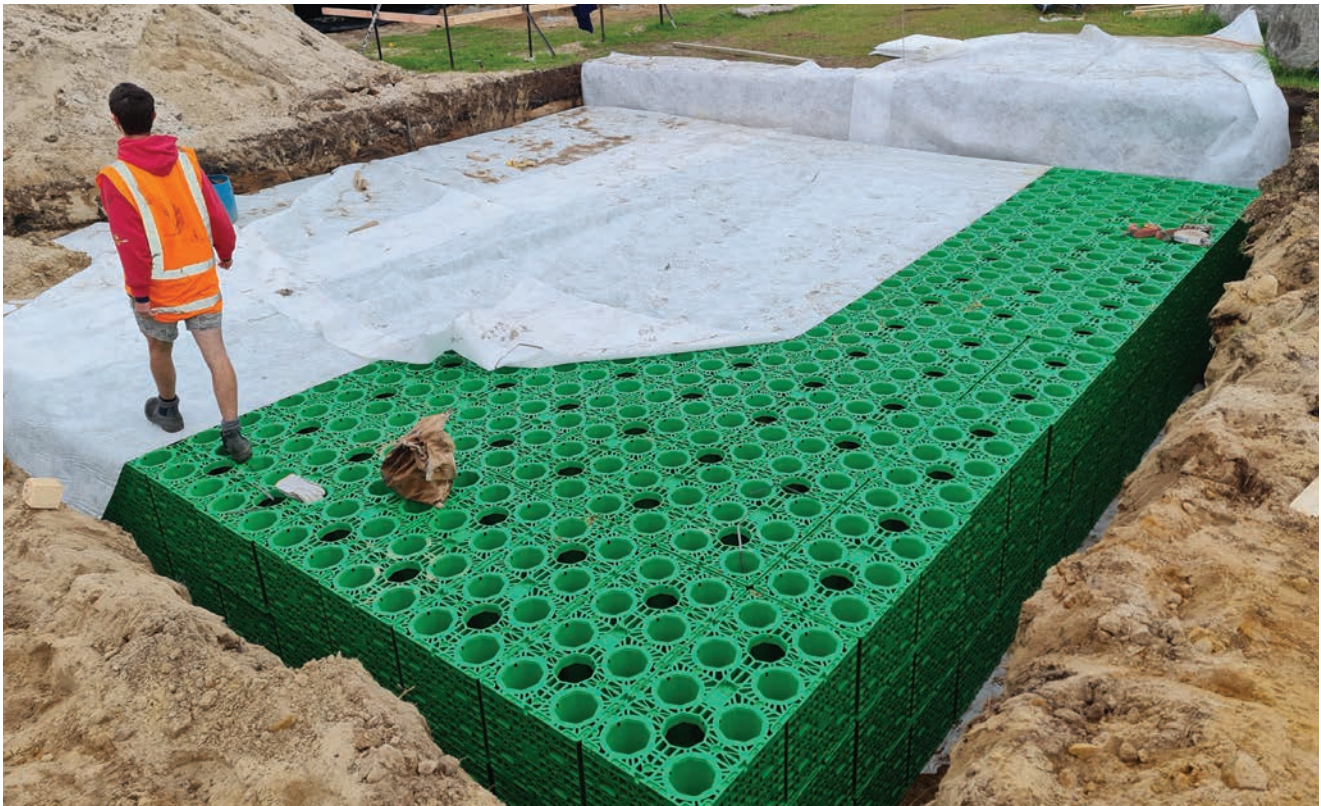
## BENEFITS

- 960mm x 30m = 28.8m<sup>2</sup> of coverage
- Re-usable
- Shock absorbing cushion technology
- Spill absorbent without reducing strength
- Slip resistant GripSpot Technology
- Anti-Slip back surface
- Product won't stain or mark floors
- TUATARA Tape available
- Recyclable

Note: Not suitable where breathable protection is required, e.g., polished concrete floors.



# STORMCELL



The StormCell system offers flexible design whilst being light weight and high load bearing. The system has minimal componentry for rapid assembly on-site and offers a high void ratio enabling the best utilisation of space.

Vehicular options are available for creating trafficable areas, and modules are stackable which ensures economical transportation and on-site storage.



## BENEFITS

- 50 ton per square metre safe working load.
- StormCells large voids ensure there are no barriers or trap points.
- This allows for even water distribution throughout the system -maximising the footprint for total soakage.
- StormCell has been independently tested in New Zealand to guarantee vertical load and side integrity.
- This testing is vital and ensures design engineers can have 100% faith in the product when faced with tight constraints on site.

## SPECS

### CRUSH LOAD FIGURES

Top:  $\geq 505 \text{kn} / \text{m}^2$  @ 23°C  
Side:  $93 \text{kn} / \text{m}^2$  @ 23°C

### SCOPE

Excavation depth of tank: 0.6m - 9m  
Usable depth of tank: 0.6m - 9m  
Backfill depth: 0.6m - 9m

### SPECIFICATIONS

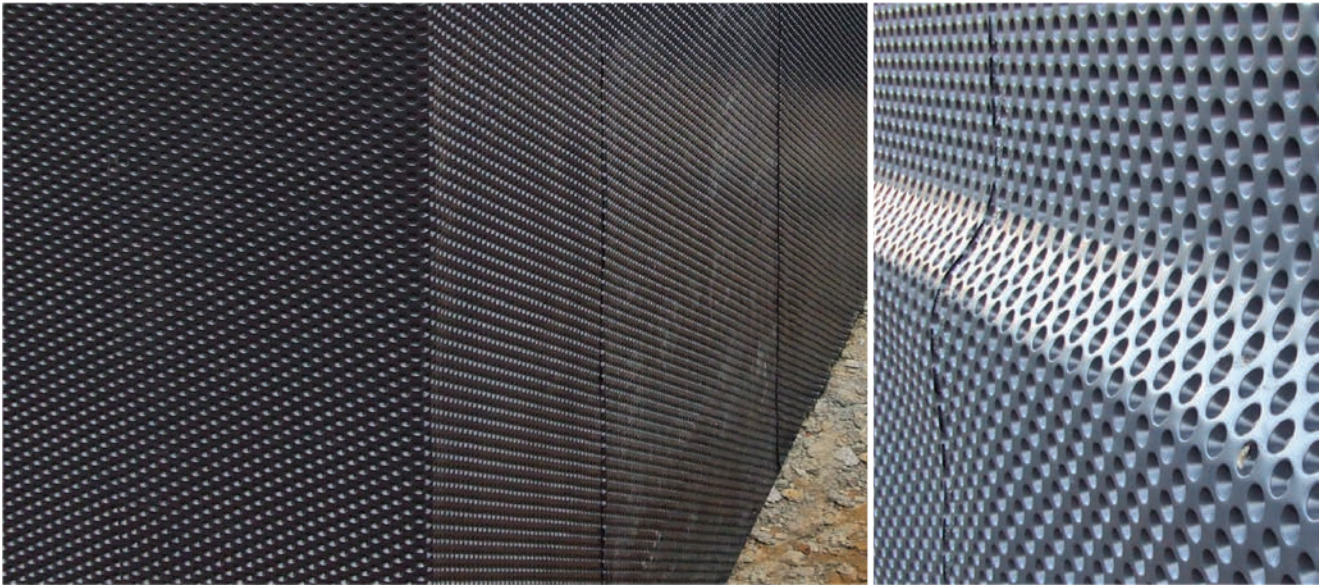
Length: 1000mm	Width: 500mm
Height: 400mm / 500mm	Weight: 16kg / 17kg
Void ratio: 95	Water storage: 195L / 237.5L



# DRAINAGE BOARD

## PRO-DRAIN 8

The protection board that creates a neutral pressure zone between the foundation wall and subsoil.



### Installation



To hold sheets in place, apply Neutral Cure adhesive to raised dimples.



100 Primer and tak spray can also be used. Check compatibility with substrate.



Place dimples against wall surface. Sheets can be laid horizontally or vertically.



A Chased Metal Flashing can be used to terminate the top of the ProWall & ProDrain8.



100 Primer and Protecto Tape



OPTIONAL: Top edge can be sealed using 100 Primer and Protecto Tape to stop foreign material falling into cavity.

Apply a plaster system over Protecto Tape within 90 days of installation.

### BENEFITS

- Quick and easy to install
- Provides continuous protection to the membrane
- Follows contours of the substrate
- Close dimple spacing provides high compressive strength - 250 kN/m<sup>2</sup> (25 t/m<sup>2</sup>) and stability
- Provides drainage over the wall surface
- Extremely durable
- Resistant to a wide range of chemicals, impervious to root penetration, rot proof and unaffected by soil bacteria and fungi
- Non-polluting for drinking water
- Sheet size 2.1m x 1.2m

# PRO-JOIST



## Installation



Building wrap taped around joist penetration back to underlay.



Tape sides and top of Pro-Joist back to underlay. Pro-Joist overhangs joist by minimum of 35mm.



Pro-Joist to be painted or protected from UV by scribe.

## BENEFITS

- Two widths to suit single (47mm) and double (94mm) timber joists
- Suitable for joist depth up to 250mm
- Saddle flashing you can cut to length on site
- Reliable, durable cost effective saddle flashing
- No laps, joins or rivet holes
- Trouble free - will not crack or corrode
- UV Stabilised Polypropylene
- NZ made

Note: Must use Soudal BlackJack sealant between the Pro-Joist saddle Flashing and timber joist.



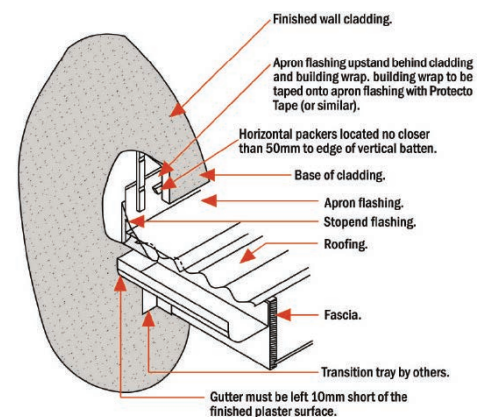
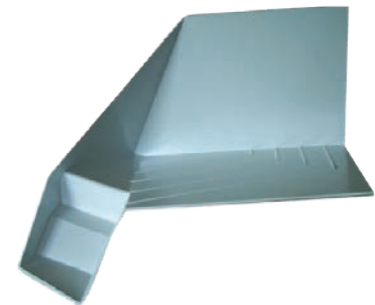
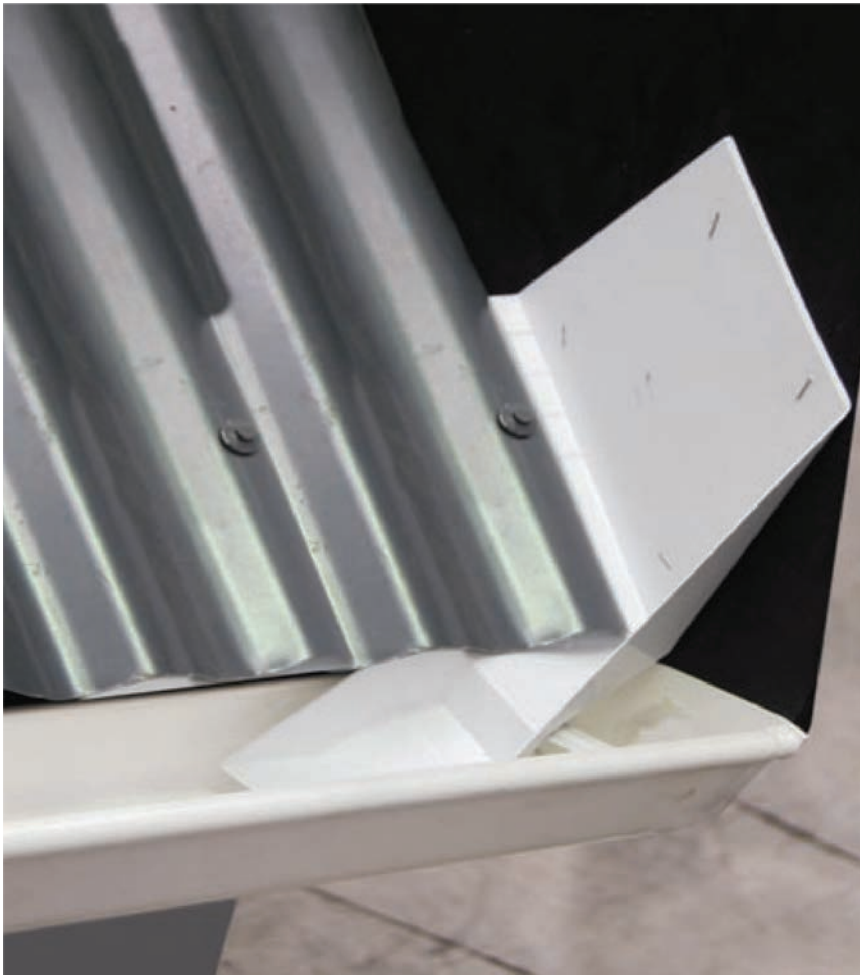
**BRANZ Appraised**  
Appraisal No.531 [2015]



# KICK-OUT FLASHING

## PRO-KICKOUT

KICKOUT Flashing diverts water into the gutter at roof & wall junctions.



Left & right hand kick-out flashings are available.

## BENEFITS

- Pro-Kickout flashing is installed above the guttering and fixed under the apron flashing where the roof meets a vertical wall
- Pro-Kickout creates a downward and outward water flow off the roof and away from the wall, preventing water intrusion at roof to wall intersections
- Quality assured manufacturing
- Formed as a single unit without any rivets or welds
- Can be painted
- UV Stabilised uPVC
- NZ made



## PRO-SILL SYSTEM

The professional's flexible flashing tape system for waterproofing window and door openings.



### Protecto Tak Primer/Adhesive

369gm aerosol.

A spray on primer/adhesive coloured blue for easy identification.



### Detail Tape

150mm x 15m rolls.

1mm thick comfortable tape that can be stretched and moulded to any shape



### Protecto Sill

150mm x 30m rolls

Polyethylene backed asphalt adhesive membrane 0.5mm thick.

### Installation



Cut wall underlay and staple to inside of opening.



Apply Protecto Tak Primer to all areas that will be taped.



Cut detail tape to 250mm. Remove backing paper and fit to corners.



Peel plastic film from surface of Detail Tape and fold onto face of opening.



Detail Tape is required on all four corners of the opening. Press firmly into corners.



Cut Sill Tape 200mm long and apply to bottom of jambs and fold onto face of opening.



Cut Sill Tape to length, apply to sill and fold onto face of opening.



All tapes to be pressed firmly into place to maximise adhesion.

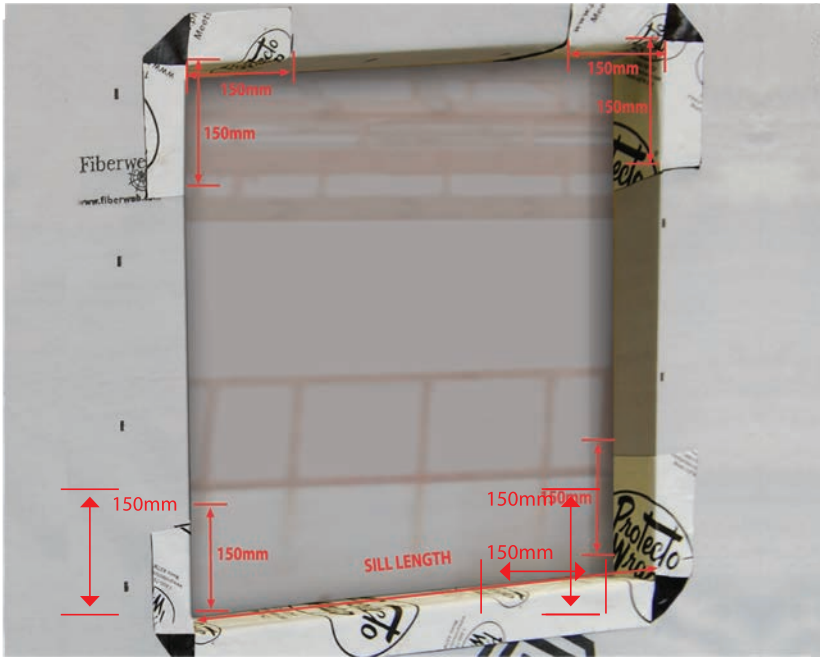
## BENEFITS

- Slimline tapes that maximise opening space for window installation.
- Flexible flashing tape meeting E2 and WANZ requirements.
- Zero waste as tape can be overlapped.
- Primers allow adhesion to most substrates.
- 90 day UV stability.
- Can be used with RAB Systems. Primers give superior adhesion and can be exposed to UV for 90 days.



## ONE PIECE SILL TAPE

The one piece combination flashing tape for superior waterproofing of window and door openings.



### Installation



Cut and staple to wall underlay. Draw a mark 150mm up from bottom corners. Cut tape to length required. Sill length + 300m.



Apply Protecto Tak Primer to all areas that will be taped.



Starting at 150mm mark, apply tape down the frame and across the opening. Remove the backing paper as you apply tape.



Fold the top branded flap back into the opening. Stick the middle and ends of the bottom adhesive tape onto the wall underlay face.



Starting at one end, remove the release film and fold the rest of the tape onto the wall underlay.

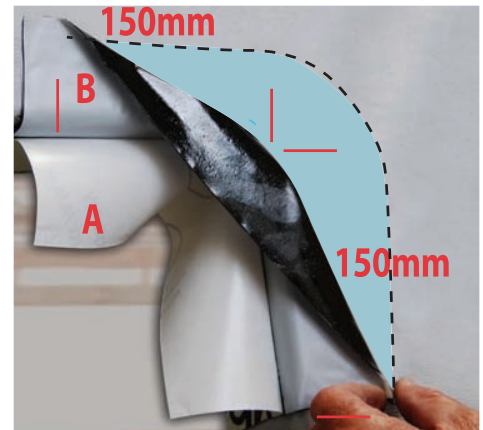


Fold the branded flap forward.



Cut the branded flap at the corners and fold onto the membrane.

### Top corner installation



1. Cut a 300mm length of tape.
2. Apply Protecto Tak Primer to all areas that will be taped.
3. Remove backing paper.
4. Fold in half and fit into corner.
5. Fold the branded flap (A) back into opening.
6. Stick ends of adhesive tape (B) onto wall underlay.
7. Remove release film and fold remaining tape onto wall underlay.
8. Fold branded flap (A) forward.
9. Cut flap at corner and fold over the exposed tape.

## BENEFITS

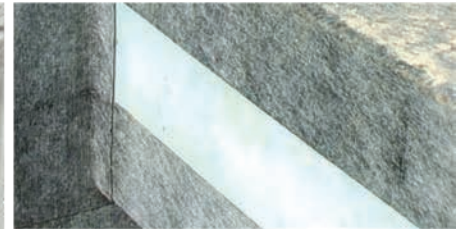
- Easily form seamless corners.
- Easy to quantify - sill length + 900mm per opening.
- Fast no waste one piece installation.
- 90 day UV stability.
- Roll size 150mm x 20m



# PLASTERABLE TAPE

## PROTECTO TAPE

The waterproofing membrane tape for exterior protection solutions. Render/plasterable.



### PRIMER TABLE

	Protecto Tak	#100 VOC	Universal WB Primer
Polystyrene	✓	X	✓
Fibre Cement	✓	✓	✓
Masonry	X	✓	X
Steel	X	✓	X

Select correct primer from table

### Installation



Apply primer and allow to tack off.



Apply Protecto Wrap Detail Tape where flashing is required.



Remove backing paper and apply Protecto Tape.



Cut and fold Protecto Tape to fit.



Apply JS160 Mastic to all overlaps and joins. NB: 100mm overlap required.



Trowel mastic smooth and press overlaps firmly together.



Press firmly all installed membrane to maximise adhesion.

### BENEFITS

- Fast and easy to install
- Can be plastered/rendered directly over
- 15 year product warranty
- Adaptable to fit most flashing requirements
- Zero waste as tapes can be overlapped
- Will self seal around mechanical fasteners as long as no pilot holes are drilled
- Roll sizes 75mm x 30m, 150mm x 30m, 300mm x 30m & 400mm x 30m



## UV RESISTANT SELF-ADHERING ALL-PURPOSE PEEL AND STICK SEALING TAPE

Provides a quick and simple solution to fix leaks. New formulation. No primers required.



### Sizes

75mm | 100mm | 150mm | 300mm wide x 15m rolls.

### BENEFITS

- Pro-Seal Plus can be used as a temporary waterproofing tape or as a solution for leaks around the home
- Pro-Seal Plus adhesion is a modified hybrid butyl adhered to a white aluminium facer
- Simply cut to size, peel off the backing paper and stick to the prepared surface. (Surfaces must be clean and dry)
- No primers required
- High tensile strength and puncture resistance. Always check substrates for compatibility
- UV stable flashing tape
- Roll sizes 25mm x 30m, 150mm x 30m, 300mm x 30m & 400mm x 30m

## THE PROFOOT PEDESTAL RANGE

The ProFoot Adjustable Pedestal range creates that seamless indoor outdoor flow that is so important to the Kiwi lifestyle.



Adjustable Pedestal solutions from 10mm to 500mm+. Versatile applications thanks to a modular system comprising of various base pedestals.

Extension rings which provide a simple solution to achieve additional height where required, in conjunction with a range of adapters to suit timber, stone or the EVO aluminium substructure.



### BENEFITS

- Suitable for Decking and Stone Pavers
- Solutions for low levels where low assembly height is critical
- Use our EVO aluminium substructure or timber joists
- Range of fixing options from stainless steel screws to concealed fixing option
- Comprehensive range of components to form fascia's, stairs and ramps.





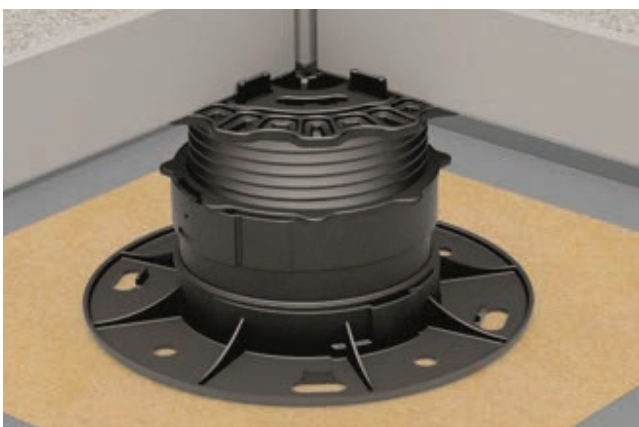
The ProFoot Pedestal range provides an array of solutions for the substructure. Select the appropriate adaptor and simply 'click' into the pedestal head.

Timber joists can be side fixed into the 'L' adaptor making installation effortless.

## Click adapters



The 'Click' adapters are designed to suit the EVO aluminium substructure system. The 'Click' Adapter fits into the pedestal head and the EVO profile clicks into the adapter providing a quick and stable connection.



## Stone adapters



The 'Stone' adapter fits into the pedestal head. The tabs on the adapter can be snapped off as required to suit the location of the tile. The 2.5mm tab provides an attractive negative detail which allows for water run off from the surface of the tile.

# PROFOOT

The EVO range of profiles offer a comprehensive suite of sub-structures to support your deck. The aluminium profiles provide a straight, true and dimensionally stable sub-structure to support timber or stone. EVO profiles are supplied in 4.0m lengths.



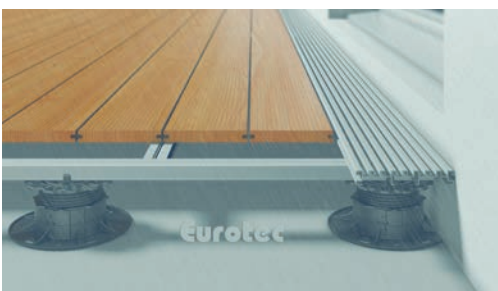
EVO 40 provides a robust sub-structure with the ability to span greater distances between pedestals.

EVO Slim at 20mm high is ideal where low height assembly is critical whilst still providing a dimensionally stable platform.



EVO Light is specifically designed for timber decking, whether direct screw fixing or with the EVO Light concealed fixings.

The ProFoot range offers a multitude of aesthetic solutions from fascia options for complementing the front edge of a deck to componentry for forming stairs and ramps.



DrainTec profile offers an aesthetic finish to the perimeter of decks or simply run adjacent to the structure. The geometry prevents splashback from the deck staining the cladding.

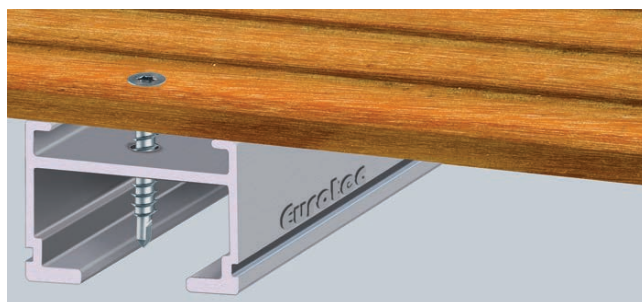
# PROFOOT

Fastening options include direct screw fix through the EVO aluminium profile to hidden fastenings options for timber and composite decking.



The Twin System Clip locks into the EVO sub-structure. The groove decking boards are fitted in place then secured with the stainless steel clamping plate. The Twin System Clip is ideal for composite decking.

Deck Gliders come in two sizes and can be used with dimensionally stable timber. The gliders are screw fixed to the underside of the decking and sit within the top channel of the EVO profile.



We have a range of A4 stainless steel screws for timber to timber fixing and timber decking to the EVO aluminium profile. Screws are compliant with German standards.

For further information refer to our website or call us for assistance in design or calculating quantities for your next deck.







FREEPHONE: 0800 776 9727

[www.mwnz.com](http://www.mwnz.com)